

Sponsorship Opportunities

- ☞ \$400 - 1 week of care for one participant
- ☞ \$250 - 1 week of programming for one participant
- ☞ \$240 - 3 days of care for one participant
- ☞ \$160 - 2 days of care for one participant
- ☞ \$100 - 2 days of programming for one participant
- ☞ \$80 - 1 day of care for one participant
- ☞ \$50 - 1 day of programming for one participant
- ☞ \$40 - 1/2 day of care for one participant

Items We Dream About

- ★ Gift Cards for Office Depot, Wal-Mart, Sam's
- ★ Large Storage Boxes with Lids & Handles
- ★ CD/Cassette players
- ★ DVD/VHS Combo Players
- ★ Coffee Urns Needed (30 cup and 55-60 cup)
- ★ Desktop All-in-One Printers (scanner/color printer HP)
- ★ Storage Cabinets, locking (2)

Alzheimer's Day Services of Memphis (ADS) is a local, non-profit agency that offers hands-on services by providing a therapeutic activity day program for those living with Alzheimer's or related disorders.

Keeping Families Together Since 1983

Some families receive scholarship help.

Your donations of all kinds are critical to ADS!



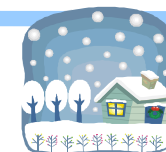
Alzheimer's Day Services
of Memphis, Inc.

(901) 372 - 4585

www.alzheimersdayservices.org

**ALZHEIMER'S
DAY SERVICES**
of Memphis

Winter Wish List 2011



***Two Centers to Serve
the Mid-South***

DOROTHY'S PLACE
3185 Hickory Hill Road
Memphis, TN 38115-2533



LOUIS E. GRASHOT CENTER
4585 Raleigh LaGrange Road
(Inside Kennedy Park)
Memphis, TN 38128-6413

ADS' Mission is to provide safe, stimulating day programs for those living with Alzheimer's or related disorders and to provide support, education and relief to the caregivers and families.

Critical Need Items

- ◆ Aluminum foil
- ◆ Bleach, liquid
- ◆ Coffee, decaffeinated
- ◆ Copy paper (20 lb white)
- ◆ Cornmeal, self rising
- ◆ Facial tissue
- ◆ Fruit, canned
- ◆ Fruit juices
- ◆ Heavy duty can opener, non-electric
- ◆ Laundry detergent, Regular & High Energy
- ◆ Oatmeal / Cereals
- ◆ Paper towels*
- ◆ Pasta or Noodles
- ◆ Plastic wrap
- ◆ Rice or dry beans
- ◆ Soap, liquid body or hand
- ◆ Wet Wipes, folded sheets*
- ◆ Sugar substitutes, bulk & packets*
- ◆ Toilet paper
- ◆ Trash bags, 13 gallon
- ◆ Trash bags, 33 - 55 gallon

(* = most critical)



Thank You!

Personal Items

- ◆ Bath Towels (used)
- ◆ Nail polish and remover

Cleaning Items

- ◆ Cleanser, multi-purpose with bleach
- ◆ Disinfectant spray
- ◆ Pine cleaner
- ◆ Rug Spot Remover
- ◆ Scouring powder
- ◆ S.O.S. type scouring pads

Activity Items

- ◆ Batteries, AA and AAA
- ◆ Gloves, disposable plastic
- ◆ Art supplies, markers, watercolors, construction paper
- ◆ Paper, colored tissue
- ◆ Used nuts, bolts, screws, buttons

Office Items

- ◆ CD-R re-writable CD's
- ◆ White copy paper (20 lb white)
- ◆ Envelopes, #10 & larger, security
- ◆ Various colors of copy paper and card stock

Kitchen Items

- ◆ Storage bags, gallon size
- ◆ Storage bags, quart size

Food Items

- ◆ Baking soda
- ◆ Crackers, soda
- ◆ Creamer, coffee
- ◆ Flour
- ◆ Fresh produce
- ◆ Garlic powder
- ◆ Italian Seasoning
- ◆ Jell-O, sugar free
- ◆ Microwave popcorn
- ◆ Mrs. Dash
- ◆ Parmesan cheese
- ◆ Pepper
- ◆ Pudding, sugar free
- ◆ Sugar substitute, bulk & packets
- ◆ Tang, powdered juices
- ◆ Tea bags, decaffeinated
- ◆ Vanilla
- ◆ Vegetables, canned

